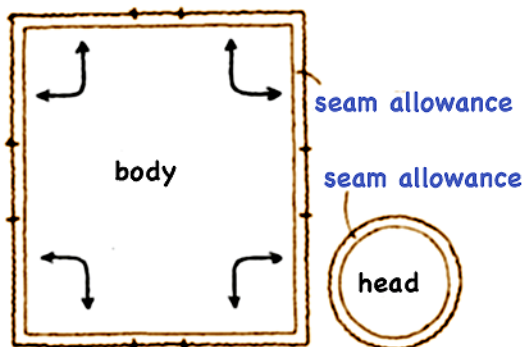


# さるぼぼ

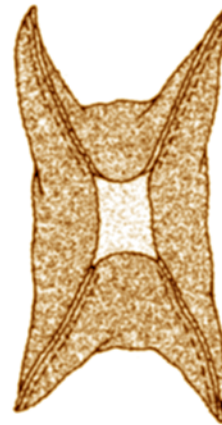
## John Marshall©2011

# sarubobo

*Sarubobo* are an early form of *hina* still in use today. The basic shape is very versatile and lends itself to many variations. It may often be seen used at the end of a key chain, or the pull on a zipper. It is used to weight the corners of banners, and to decorate pin cushions. What creative use will you find?

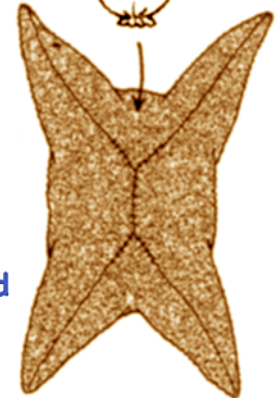


Pinch corners and sew to marks.



Turn right-side out and stuff with batting.

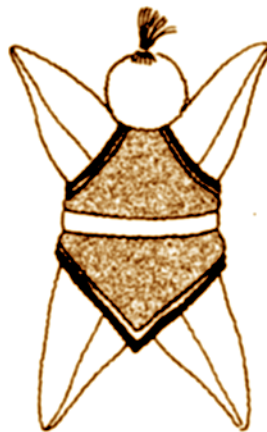
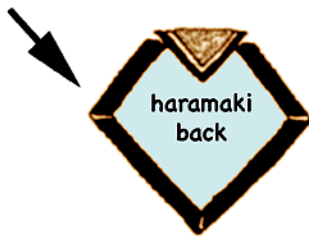
Stitch circumference of head, add batting, and pull tight to close. Add hair.



Stitch belly closed and sew head into position.



optional haramaki



traditional pin cushion



*Sanbasou*- notice how the belly has been modified to create a pouch



kids at play by Inagi Kyouko